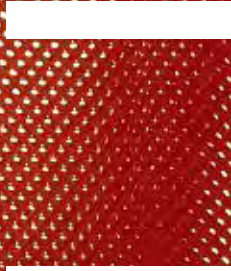




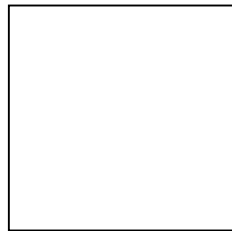
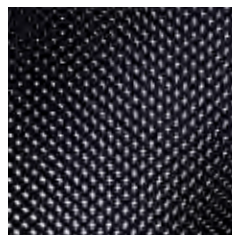
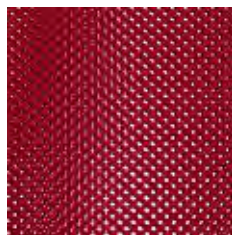
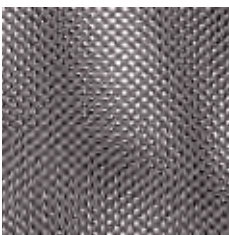
netwin, created by designer Michael Kläsener, is an office chair family comprising comfortable task chairs and conference chairs. It owes its unique character to the double backrest membrane and the generously dimensioned seat for exceptionally comfortable sitting. netwin offers an unrivalled combination of ergonomics, workmanship and value for money. It epitomises design that you feel at home with, bridging the gap between “living” and “working”. Experience this new emotional office culture: **Place 2.5**



Membrane. Seven different colours create atmosphere. The double membrane mounted in the backrest frame is made from the newly patented high-tech fabric "Wovenit". The flexing of the first membrane against the second permits excellent pressure distribution to suit different body weights.

Lumbar support. Fixed in the backrest yet soft and flexible, the lumbar support height adjustment in combination with the double membrane ensures perfect ergonomics.

Sliding seat. The seat is generously dimensioned with soft upholstery. It can be adjusted to extend the seat depth by up to 60 mm. So excellent sitting comfort is guaranteed whatever your height.



Detailed information on the subject of ecology can be found at:
www.sedus.com

Recyclability, quality and timeless design make netwin a very special chair.

Ecology. Environmental awareness and responsible use of resources are central to our company philosophy.



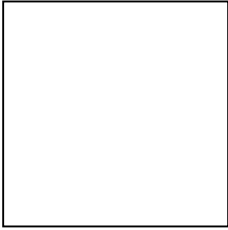
Tested and recommended
Aktion Gesunder Rücken
(campaign group for healthier backs)
www.agr-ev.de
Quality Office
www.quality-office.org

Quick adjustment. Optimal comfort and convenience is guaranteed by the patented quick adjustment feature for the backrest.

It makes setting the right backrest pressure simple for every user, whatever their weight.

Operation. Instructions are provided on the chair itself. All the controls are conveniently positioned: for adjusting the seat height, depth and tilt, the armrests and backrest.





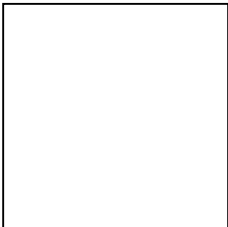
Task chair with height-adjustable armrests,
black plastic base



Task chair with 3D adjustable armrests,
polished aluminium base



Cantilever chair with armrests,
chromed frame (also stackable)



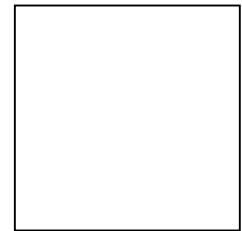
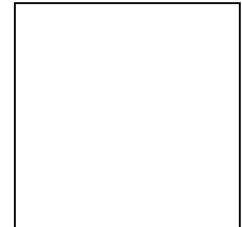
Task chair with 3D adjustable armrests,
white aluminium base

Further information
and planning data
are available to
download at:
www.sedus.com



4-leg chair with armrests,
chromed frame (stackable)

	Task chair	4-leg	Cantilever
Seat mechanisms			
"Similar" mechanism	■		
"Similar" mechanism with seat tilt adjustment	□		
Backrest technical features			
Height-adjustable lumbar support	■		
Quick backrest pressure adjustment	■		
Seat height adjustment			
Gas lift mechanism with mechanical depth springing	■		
Gas lift mechanism	□		
Frame versions			
Plastic base in black	■		
Aluminium base, powder-coated in black	□		
Aluminium base, powder-coated in white aluminium	□		
Polished aluminium base	□		
Steel frame, powder-coated in black		■	■
Steel frame, powder-coated in white aluminium		□	□
Steel frame, chromed		□	□
Model colour (mechanism and plastic parts)			
Black	■	■	■
Armrests			
Without armrests	□		
Height-adjustable armrests	■		
3D adjustable armrests with Softtouch finish	□		
Integral armrests with plastic finish		■	■
Features			
Sliding seat (with 60 mm depth adjustment)	□		
Hard castors for soft floors	■		
Soft castors for hard floors	□		
Stainless steel glides		■	
Plastic glides		□	□
Felt glides		□	□
Stackable (up to 5 chairs)		■	□



■ standard
□ optional

