

DOMO WALL BOOTH





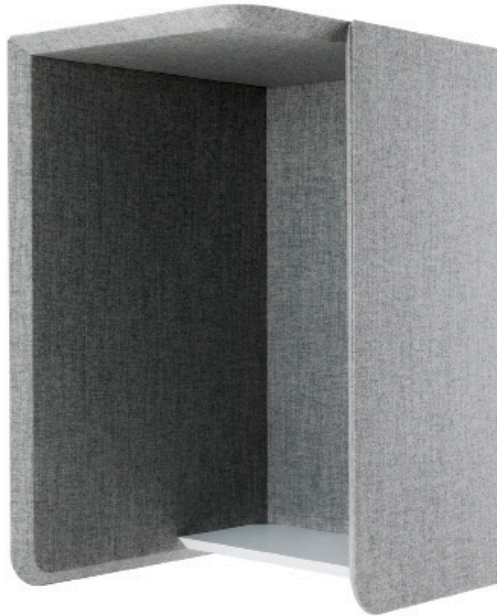
Attenuation



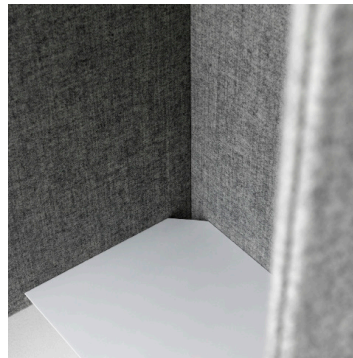
Absorption

Domo wall booth

Design Stefan Borselius



Domo sound-absorbent wall booths are ideal in environments where there is an occasional need for a quiet, isolated area.

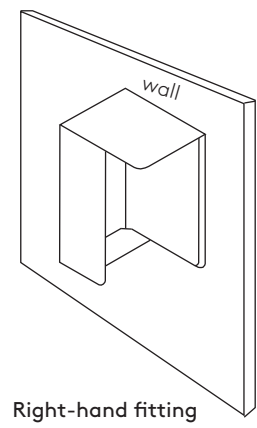
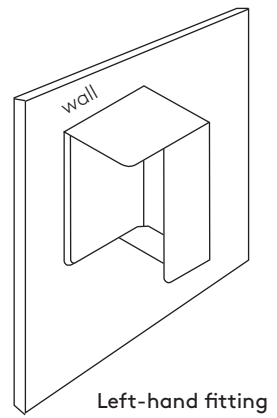
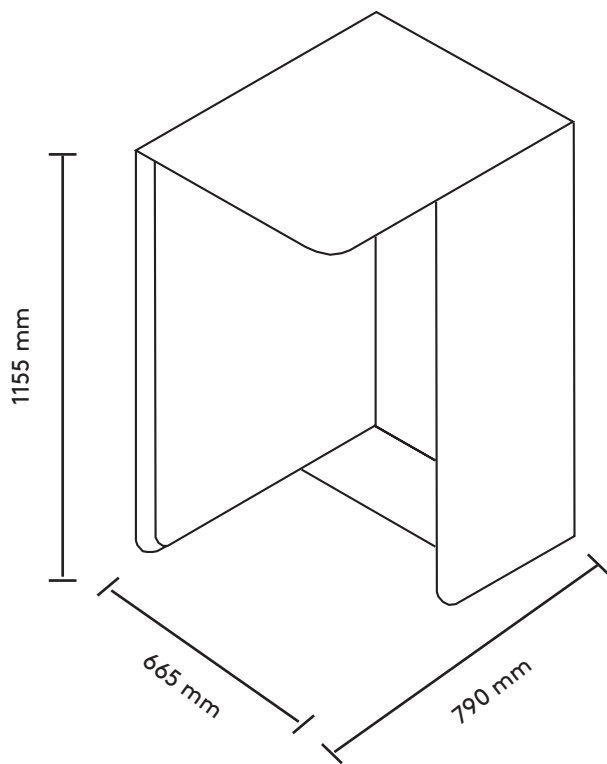


The booth is available for right or left-hand fitting. The walls/ceiling are made of an upholstered wooden frame with sound-absorbent filling. Concealed wall brackets.

Shelf in white-painted MDF. Measurements shelf: W 600 x D 300 mm. A discrete cable hole is placed in the corner.

Combine the booth with open seating in an activity-based office to enable both open and private communication!

i Technical information

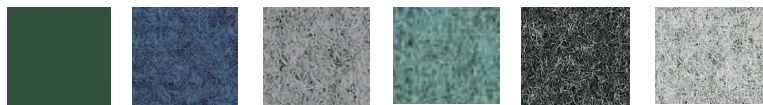


Technical information

Color Choices

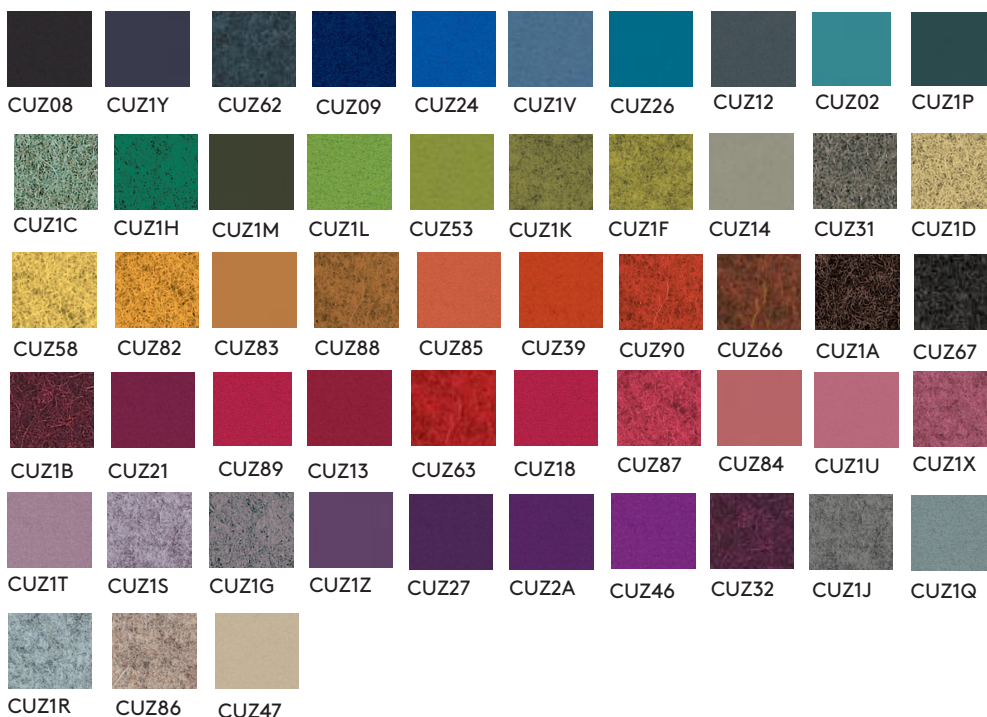
Note: Available in other fabrics. Please see the price list for more information.

BLAZER:

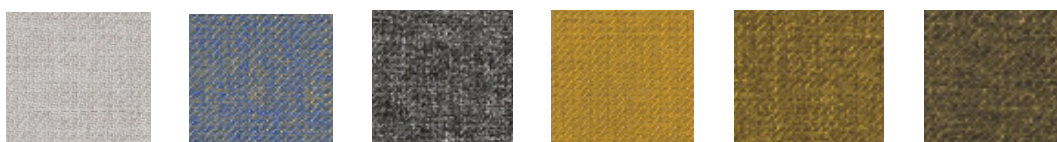


-89 CUZ1N
-88 CUZ1W
-87 CUZ1E
-85 CUZ33
-82 CUZ30
-81 CUZ28

BLAZER other colours, longer delivery times:



SALSA:



-30 **-31** **-32** **-33** **-34** **-35**



-36 **-39** **-40**

